

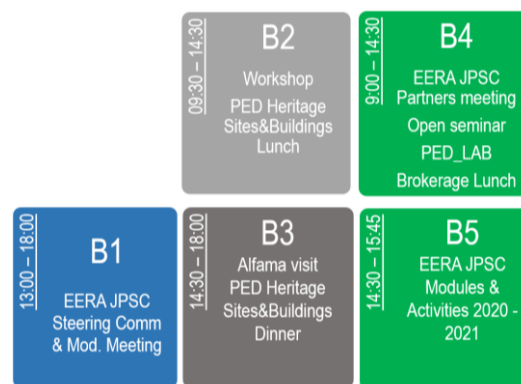
# EERA JOINT PROGRAM SMART CITIES SUMMER PARTNER MEETING 2020



[Register for the Partner meeting here](#)

MAY 27 – 29 2019 LISBON, PORTUGAL

At this Summer Partner meeting, we will visit Lisbon, who has been awarded the Green Capital of 2020. Our host LNEG offers a variety of presentations, hands-on workshops, Site Visits on cultural heritage, PED Labs and state of the art research labs.



The program shown in blocks

## Program

**27 May: Steering Committee meeting - Venue: LNEG (LUMIAR), SolarXXI Building, Street Paço do Lumiar 22, Lisbon**

- 13:15 – 13:45 Registration and coffee
- 13:45 – 14:00 Welcome by host; Helder Gonçalves, Director, LNEG  
Program and Tour de Table by EERA JPSC coordinator: Prof. Annemie Wyckmans, NTNU
- 14:00 – 15:45 Steering Committee meeting (separate agenda)
- 15:45 – 16:15 Coffee Break
- 16:15 – 18:00 Module coordinator meetings (separate agenda)
- 19:00 – 21:00 Social gathering/dinner - Own cost.



# EERA JOINT PROGRAM SMART CITIES SUMMER PARTNER MEETING 2020



[Register for the Partner meeting here](#)

## 28 May: Workshop Addressing the Heritage Sites/buildings within PEDs context (s.a.)

09:30 – 10:00 Registration & Coffee

10:00 – 13:30 Local stakeholder presentations and round table (still to confirm the final format) SC community – heritage, industry, municipalities

13:30 – 14:30 Lunch (same venue)

14:45 – 15:30 Bus transportation to Lisbon Green Capital 2020 Headquarters, visit Exposition Green Capital

16:00 – 18:00 Site Visit: With Municipality Energy Agency, Lisboa e-Nova – Alfama historic neighbourhood – Case study (pilot Living Lab) of Sustainable Historic city districts (SUSHI) project

19:00 – 21:00 EERA JPSC social dinner – Alfama neighbourhood

*“A concerted effort to preserve our heritage is a vital link to our cultural, educational, aesthetic, inspirational and economic legacies – all of the things that quite literally make us who we are.”*

Steve Barry, GoUnesco



# EERA JOINT PROGRAM SMART CITIES SUMMER PARTNER MEETING 2020



[Register for the Partner meeting here](#)

## 29 May: Partner Meeting (s.a.)

- 09:00 – 09:30 Welcome and Tour de Table by EERA JPSC Coordinator: Prof. Annemie Wyckmans, NTNU  
Welcome by host: Helder Gonçalves, Director, LNEG
- 09:30 – 09:45 The new working model of EERA aisbl, what can EERA JPSC expect, how can we contribute? EERA Secretariat
- 09:45 – 11:15 Open seminar PED projects in view of PED\_LAB and testing facilities (Module 2, LNEG/DTU)  
Presentations from the partners & PED projects
- 11:15 – 11:30 Coffee break
- 11:30 – 13:00 EERA JPSC Module updates and parallel sessions: status & next steps, gap analysis, publications
- Module 1 Definition & City Cooperation: NTNU/TNO
  - Module 5 Monitoring and evaluation: AIT
  - Module 3 Guides and Tools: Fraunhofer ISE/TNO
  - Module 4 Replication: CVUT/ENEA
- 13:00 – 14:30 Brokerage Lunch
- 14:30 – 15:45 Working session on approved EUSEW session and COST Action & SCEWC (pending status of the applications)  
Wrap-up & next steps  
LNEG facility tour: NZEB\_LAB infrastructure (SolarXXI, PV+LES)





# EERA JOINT PROGRAM SMART CITIES SUMMER PARTNER MEETING 2020



Register for the Partner meeting here

Travel info and accommodation

## 1. Location

LNEG, National Laboratory of Energy and Geology

SOLARXXI building



Street: Paço do Lumiar 22, Lisbon

### a. Transfer Airport to Lisbon centre

Underground (Metro)

The Airport Metro Station operates from 06:30 to 01:00. This connection takes you from the city centre (Saldanha) to the airport in about 21 minutes.

Please consult: <https://www.metrolisboa.pt/en/>

Airport shuttle/bus

Every 10 minute from Terminal 1 and Terminal 2. Please consult the schedule and routes/lines.

<https://www.aerobus.pt/en-GB/Home-2.aspx>

### b. Transfer from city centre to LNEG

How to get to LNEG LUMIAR Campus:

The easiest way to reach city center and LNEG is by Taxi or Uber, the average price from city center to LNEG is 8-10€.

Public transport (Metro+Bus)

First, take the underground GREEN LINE destination TELHEIRAS Station.

Then, take the Bus 747 and stop at the 4<sup>th</sup> bus station stop - R. Eugénio Salvador.

Walk 2 or 3 minutes to campus entrance (please check below photo).

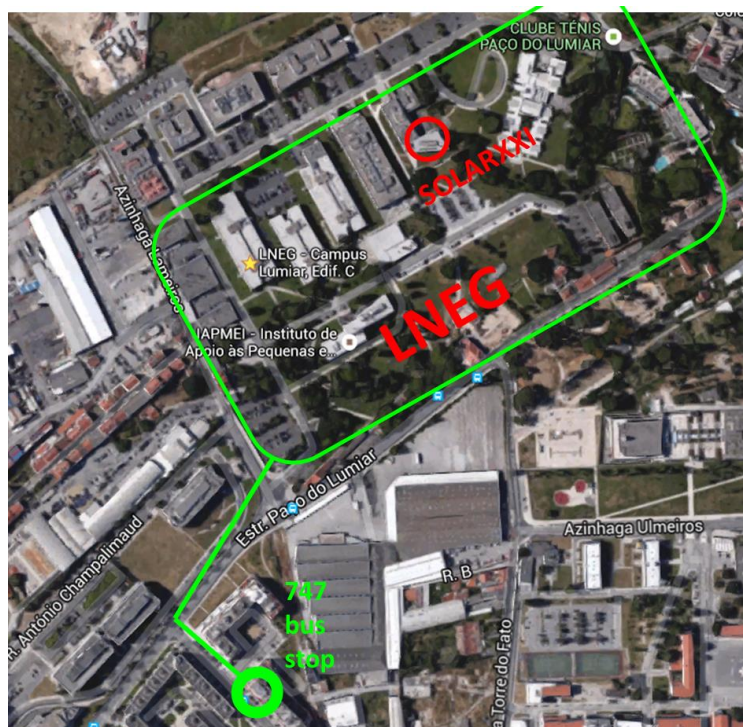
For the buses, please consult the site: <http://www.carris.pt/en/home/>



# EERA JOINT PROGRAM SMART CITIES SUMMER PARTNER MEETING 2020



Register for the Partner meeting here



## 2. Hotels

Fenix Hotels

<http://www.hfhotels.com/gb/?s=4&ss=23>

Sana Malhoa Hotel

Av. José Malhoa, nº 8, 1099-089 LISBOA

[www.malhoa.sanahotels.com](http://www.malhoa.sanahotels.com)

Hotel Açores Lisboa

Av. Columbano Bordalo Pinheiro,

n.º 3, 1070-060 Lisboa

[www.bensaudehotels.com](http://www.bensaudehotels.com)

Hotel White Lisboa

Avenida da República 9, 1050 - 185 Lisboa

[www.hotelwhitelisboa.com](http://www.hotelwhitelisboa.com)

Hotel Jupiter

Avenida da República 46, 1050-195 Lisboa

[www.jupiterhotelgroup.com](http://www.jupiterhotelgroup.com)

Hotel 3K Europa

Av. da República, 93, 1050-190 Lisboa

[www.hotel3keuropa.pt](http://www.hotel3keuropa.pt)

Vip Grand Lisboa Hotel & Spa

Avenida 5 de Outubro, 197

1050-054 Lisboa

[www.viphotels.com](http://www.viphotels.com)



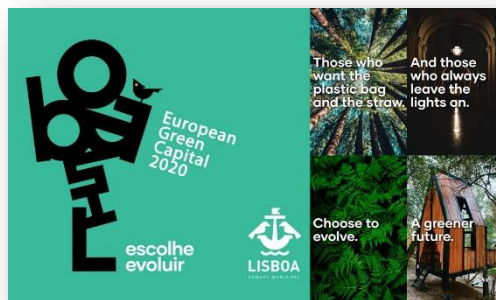
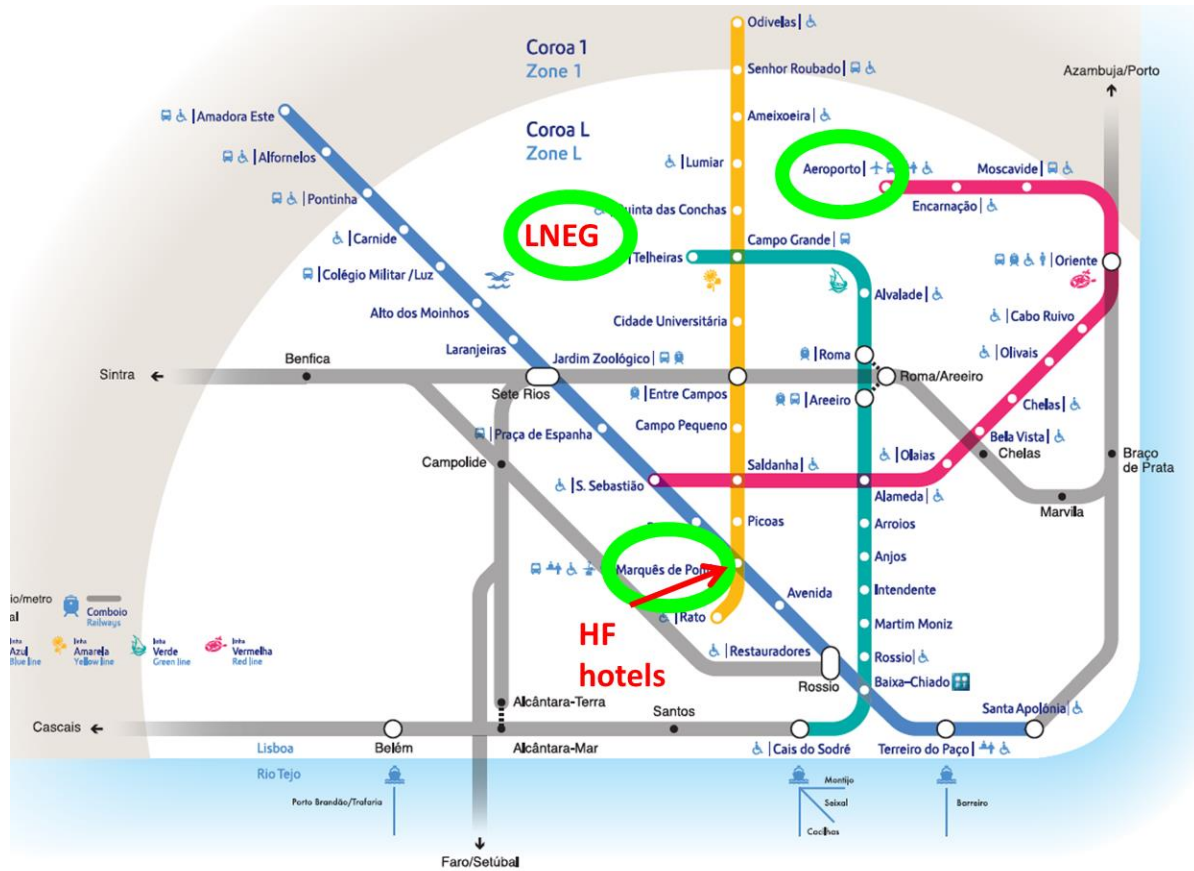


# EERA JOINT PROGRAM SMART CITIES SUMMER PARTNER MEETING 2020



Register for the Partner meeting here

## 3. Metro map



Lisbon is the European Green Capital of 2020

